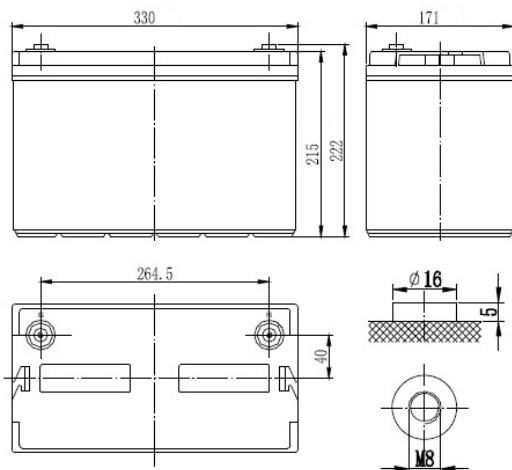




Nominal voltage	12 V	
Nominal capacity	107,0 Ah @ C20 to 1,75 V/cell 100,1 Ah @ C10 to 1,80 V/cell	
Dimensions	Length	330 mm
	Width	171 mm
	Height / Total height	215 / 222 mm
Weight	~ 29,0 kg	
Technology	VRLA (Valve Regulated Lead Acid) AGM (Absorbent Glass Mat)	
Design life time	12 years (standby use)	
Internal resistance	~ 5,7 mΩ (full charged)	
Operating temperature range	Discharge	-20°C ~ +60°C
	Charge	0°C ~ +50°C
	Storage	-20°C ~ +60°C
Maximum discharge current	900 A (5 sek.)	
Short circuit current	2 100 A	
Recommended maximum charging current	30,0 A	
Charging voltage	Standby use	13,6 ~ 13,8 VDC
	Cycle use	14,6 ~ 14,8 VDC
Self discharge	Monthly is less than 3% at 25°C	
Container material	ABS UL94HB (optional UL94-V0)	
Terminal types	Internal thread M8 (breaking torque 10-12 Nm)	



CONSTANT CURRENT DISCHARGE CHARACTERISTICS (A at 25°C)

Voltage / Time	10 min	15 min	30 min	1 h	2 h	3 h	4 h	5 h	8 h	10 h	20 h
9.6 V	233	192	108	65,3	32,65	26,80	20,10	18,80	11,75	10,40	5,46
10.0 V	210	178	103	63,9	31,95	25,90	19,43	18,30	11,49	10,30	5,42
10.2 V	202	173	101	63,2	31,60	25,70	19,28	18,20	11,38	10,20	5,40
10.5 V	188	161	97,5	62,1	31,05	25,10	18,83	17,80	11,13	10,10	5,35
10.8 V	173	150	95,5	61,2	30,60	24,40	18,30	17,40	10,88	10,00	5,35

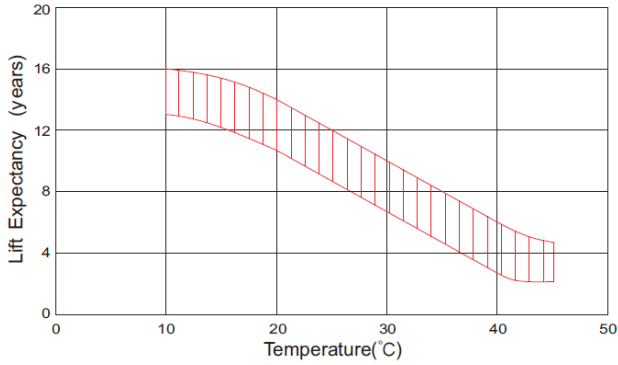
CONSTANT POWER DISCHARGE CHARACTERISTICS (W at 25°C)

Voltage / Time	10 min	15 min	30 min	1 h	2 h	3 h	4 h	5 h	8 h	10 h	20 h
9.6 V	2436	1992	1224	780	390	310,2	232,65	216,6	135,36	119,82	62,88
10.0 V	2280	1920	1176	768	384	305,4	229,05	214,8	132,48	118,14	62,46
10.2 V	2190	1896	1152	762	381	303,6	227,7	214,2	131,1	117,48	62,22
10.5 V	2076	1830	1116	738	369	300	225	213	128,22	116,34	61,62
10.8 V	1944	1974	1080	714	357	294,6	220,95	210,6	125,34	115,2	61,62

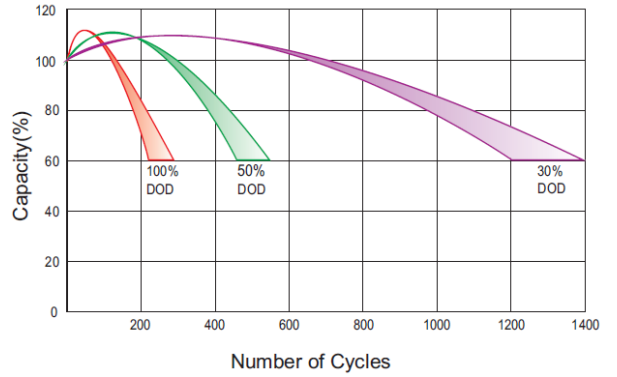
According with:

PN-EN 60896-21:2007
PN-EN 60896-22:2007
PN-EN 61056-1:2013
PN-EN 61056-2:2013
PN-E-83016:1999
ISO 9001
ISO 14001

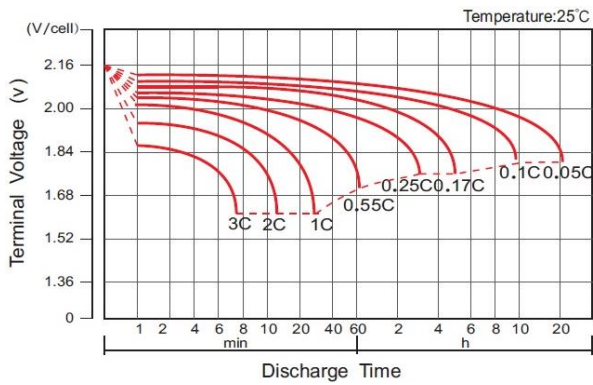
EFFECT OF TEMPERATURE ON LONG TERM LIFE



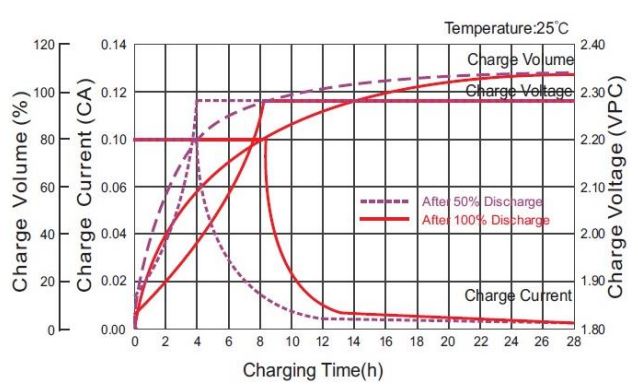
CYCLE LIFE IN RELATION TO DEPTH OF DISCHARGE



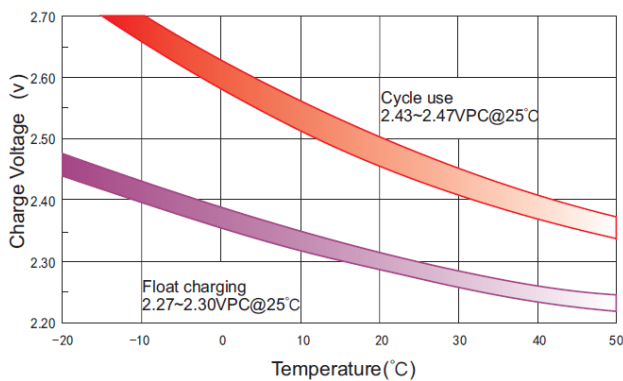
DISCHARGE CHARACTERISTICS



CHARGE CHARACTERISTIC FOR STANDBY USE



RELATIONSHIP BETWEEN CHARGING VOLTAGE AND TEMPERATURE



STORAGE CHARACTERISTICS

